

Designed by Danny D.	Checked by	Approved by	Date	Date 8/03/2016	
			extrude oef2 kubus		
			Edition	Sheet 1 / 1	

6 1 5 1 4 3 1 2 1 1

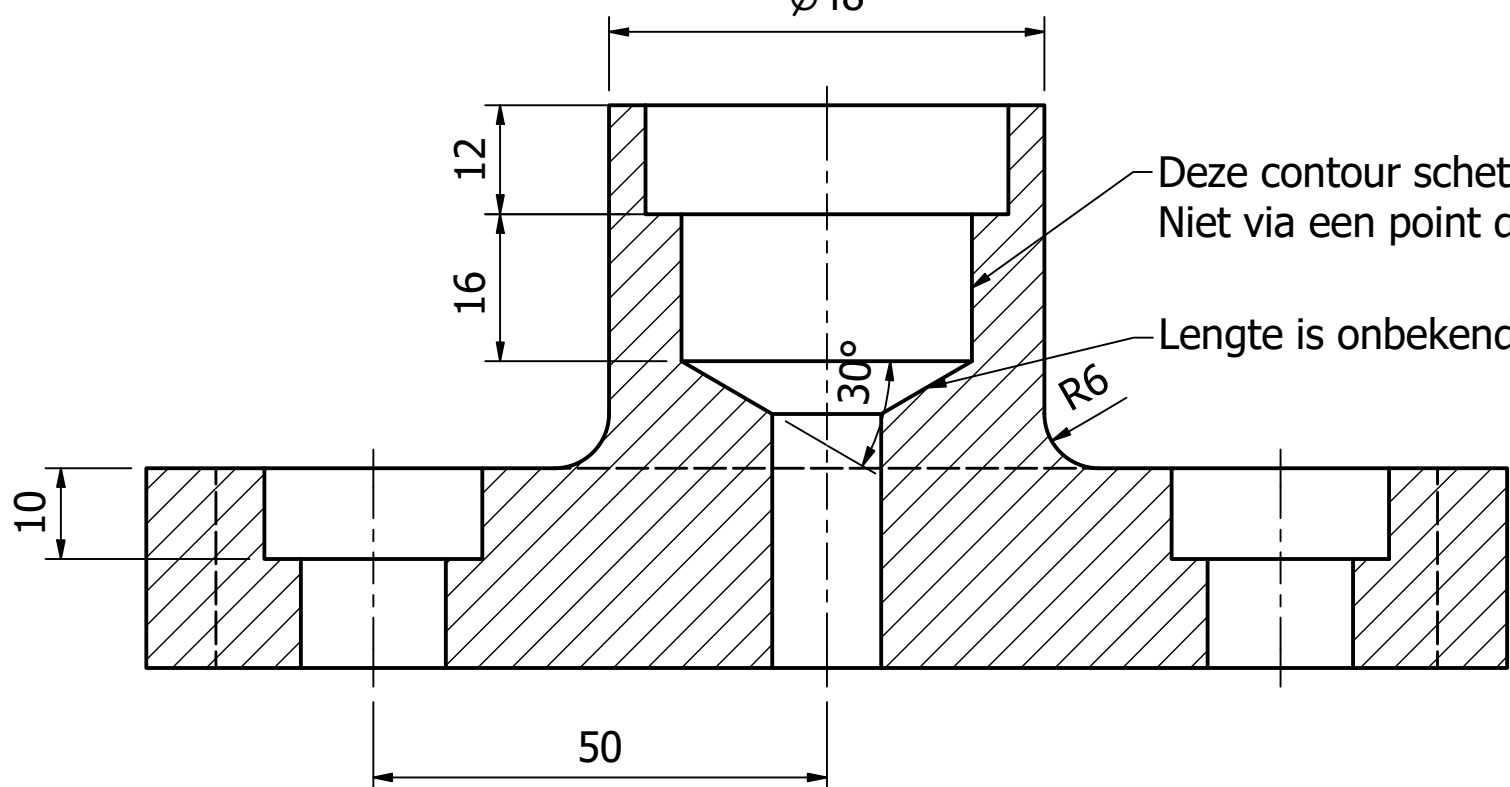
D

C

B

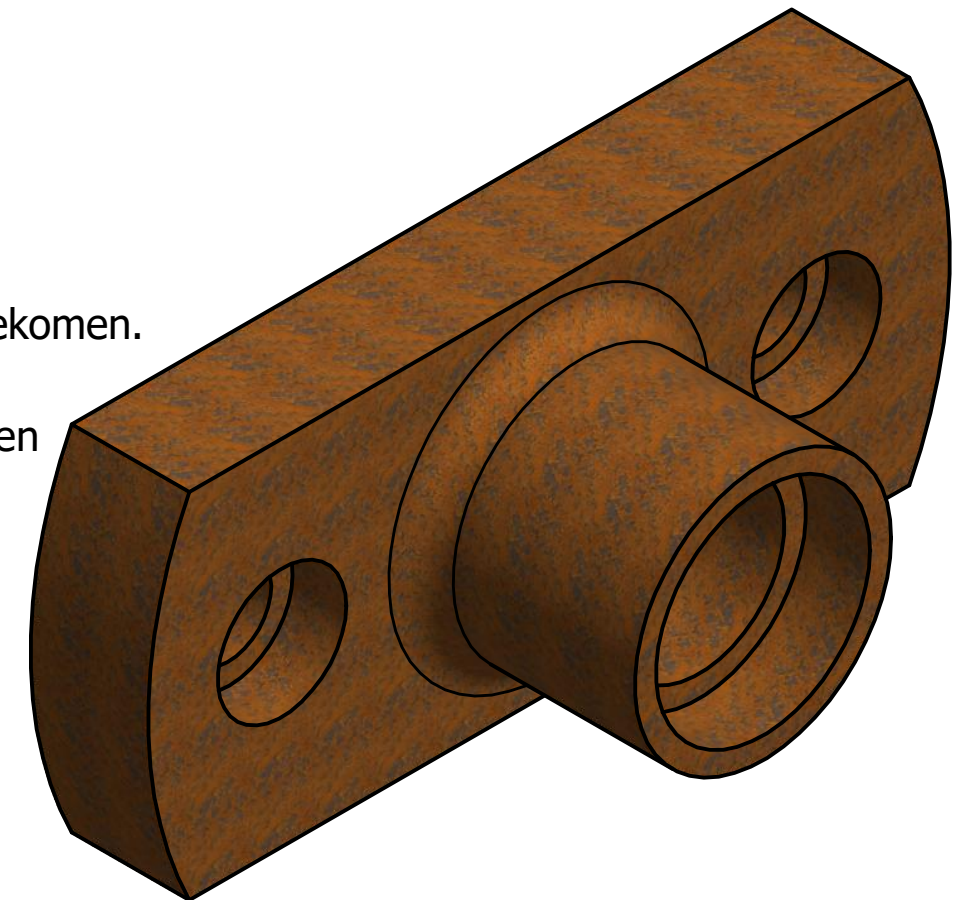
A

A-A
 $\varnothing 48$



Deze contour schetsen in de sketch
 Niet via een point dit gat proberen te bekommen.

Lengte is onbekend : tekenen en trimmen

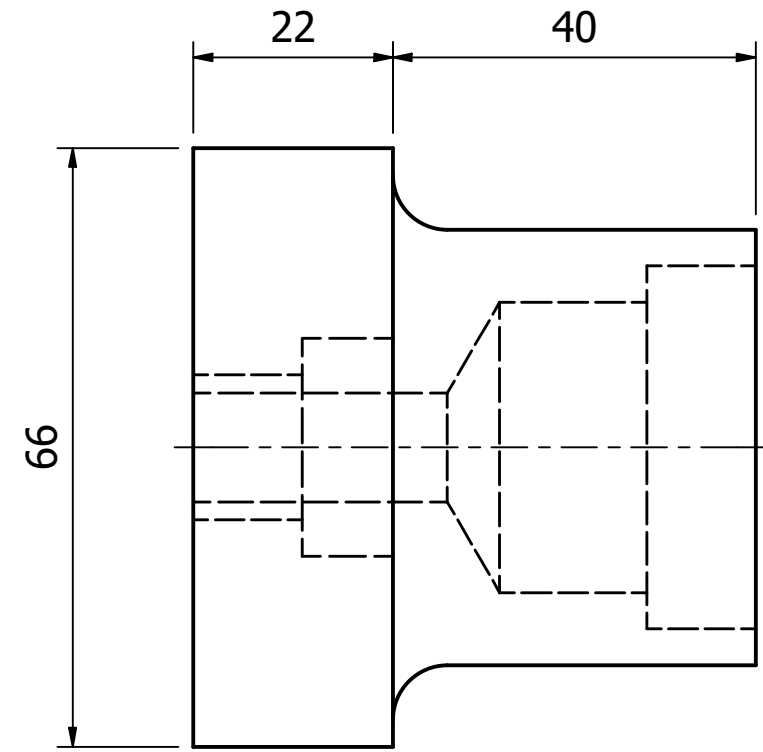
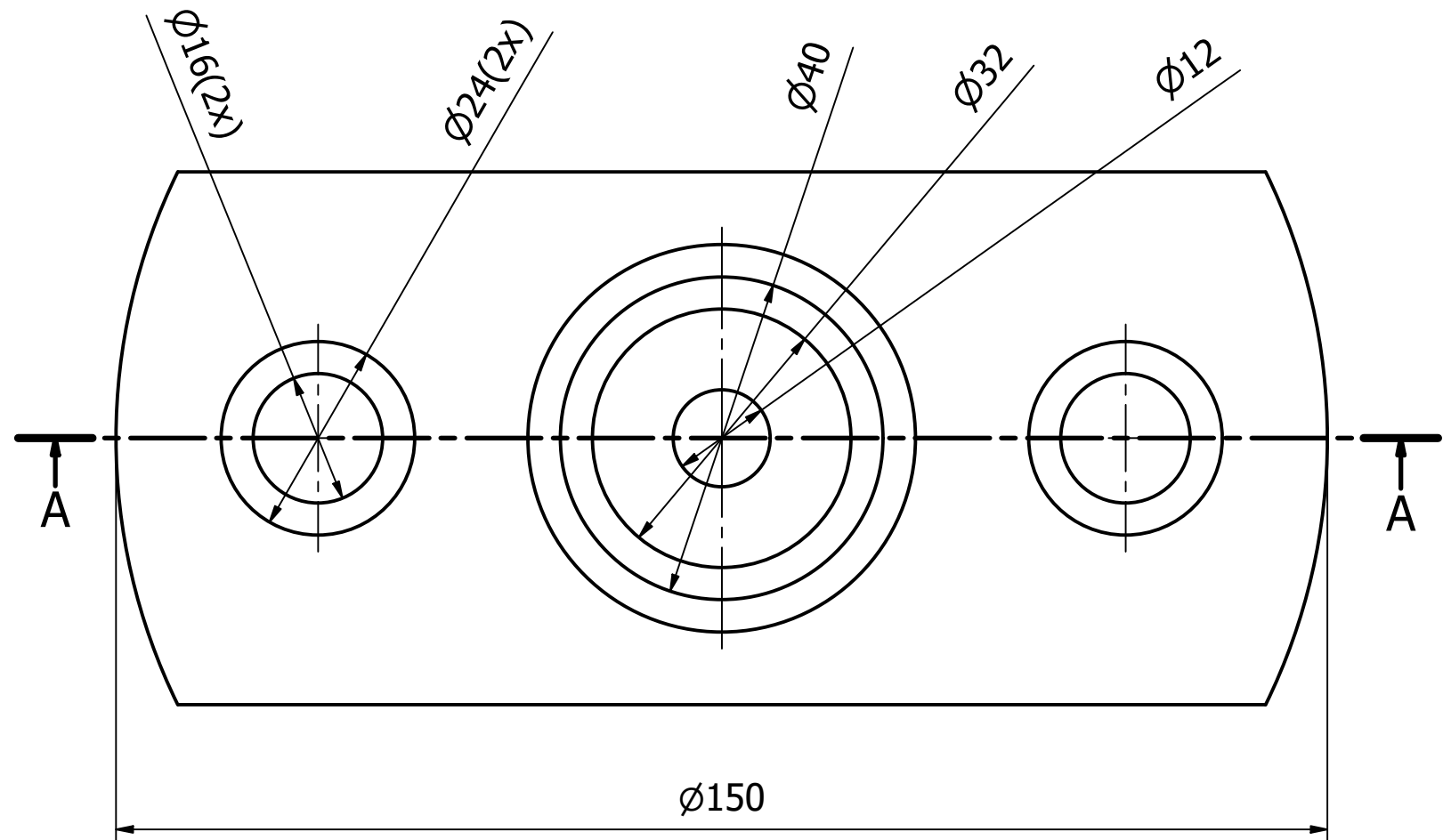


D

C

B

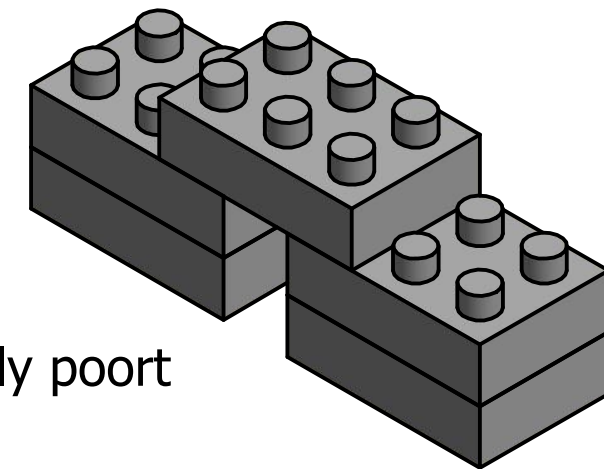
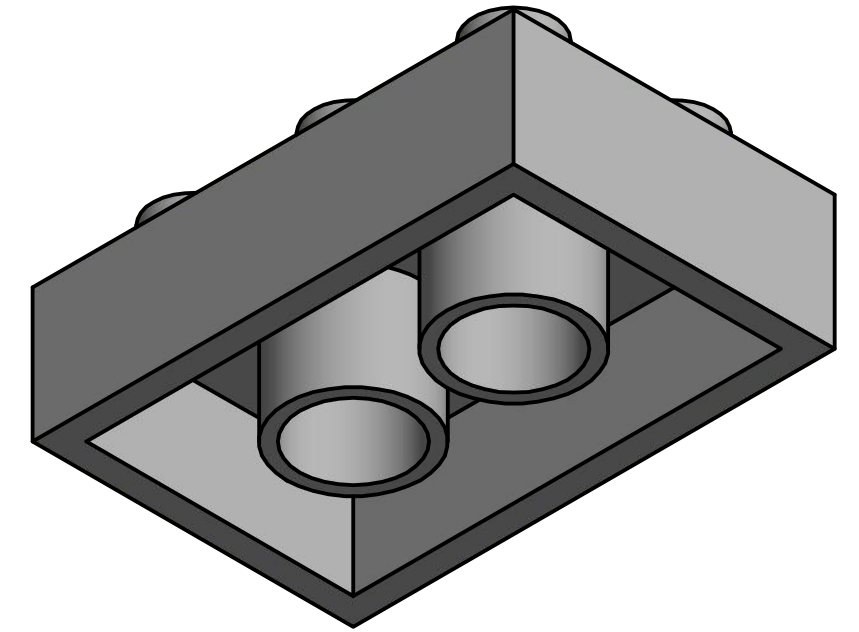
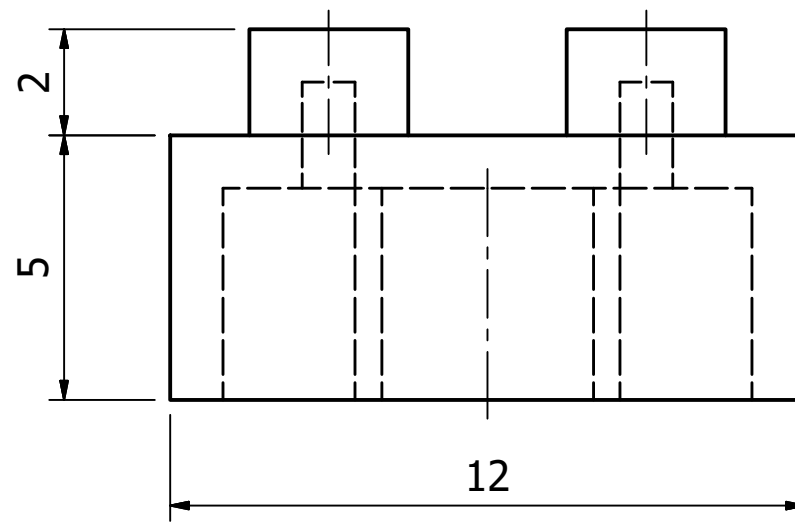
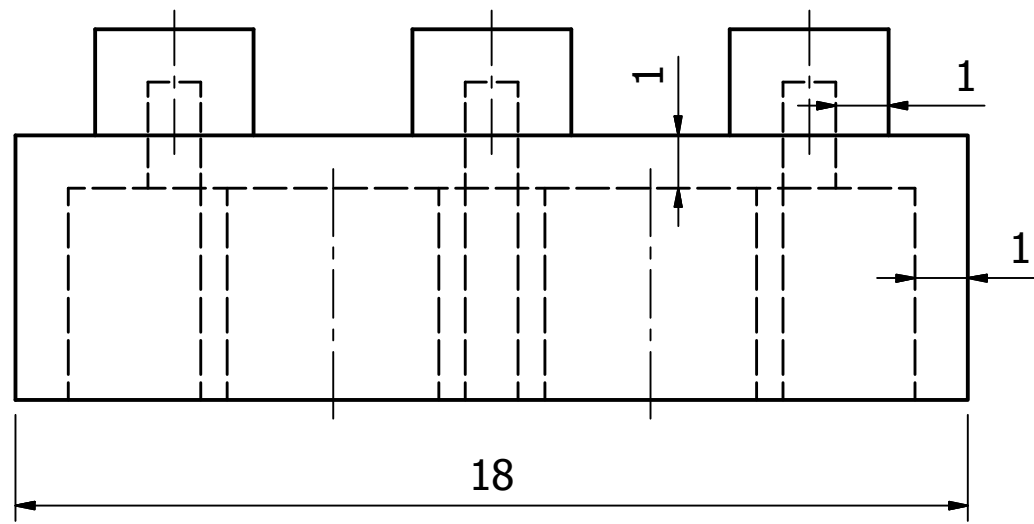
A



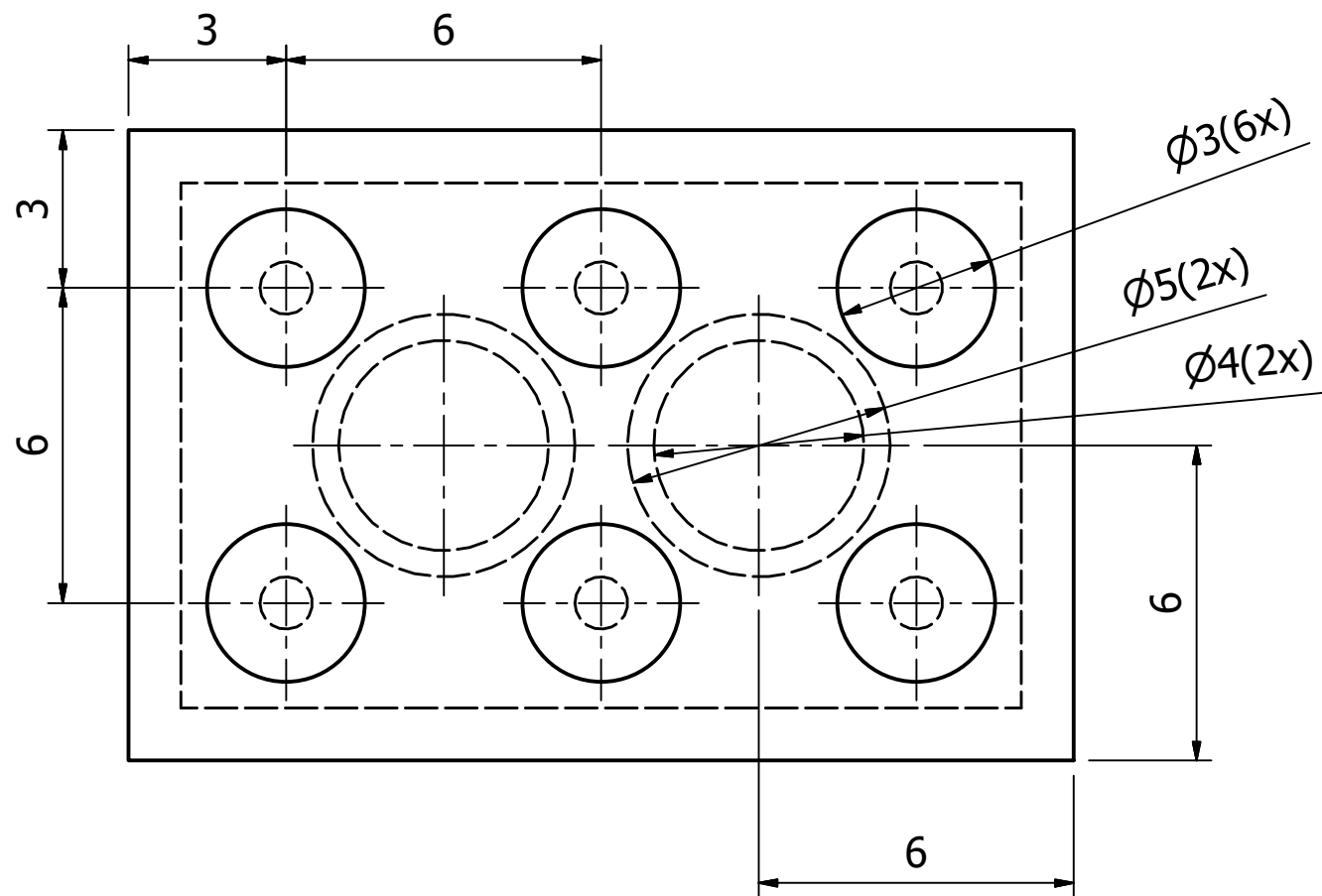
Designed by Danny D.	Checked by	Approved by	Date	Date 17/08/2017	
			revolve5		
			Edition	Sheet 1 / 1	

6 1 5 1 4 3 1 2 1 1

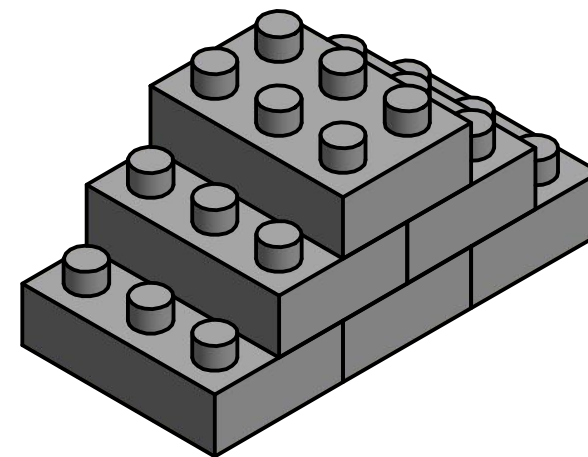
Lego 3x2



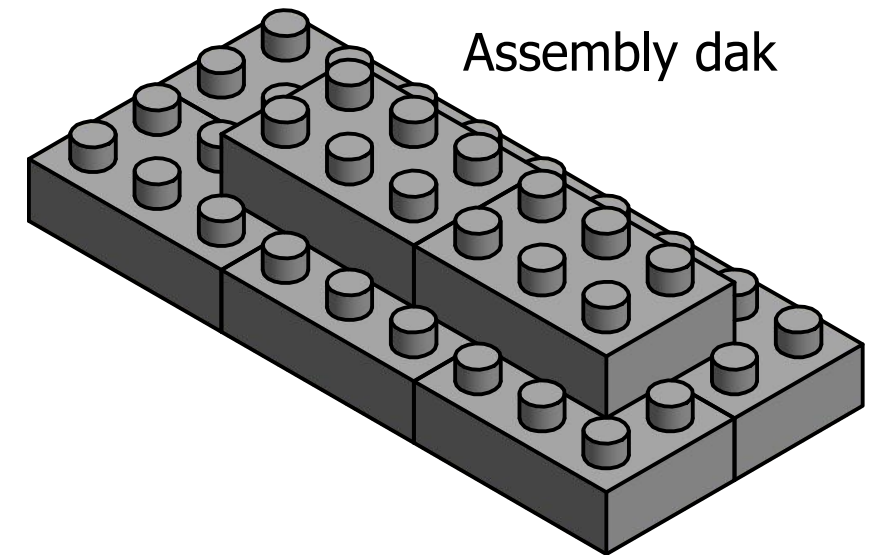
Assembly poort



Assembly trap

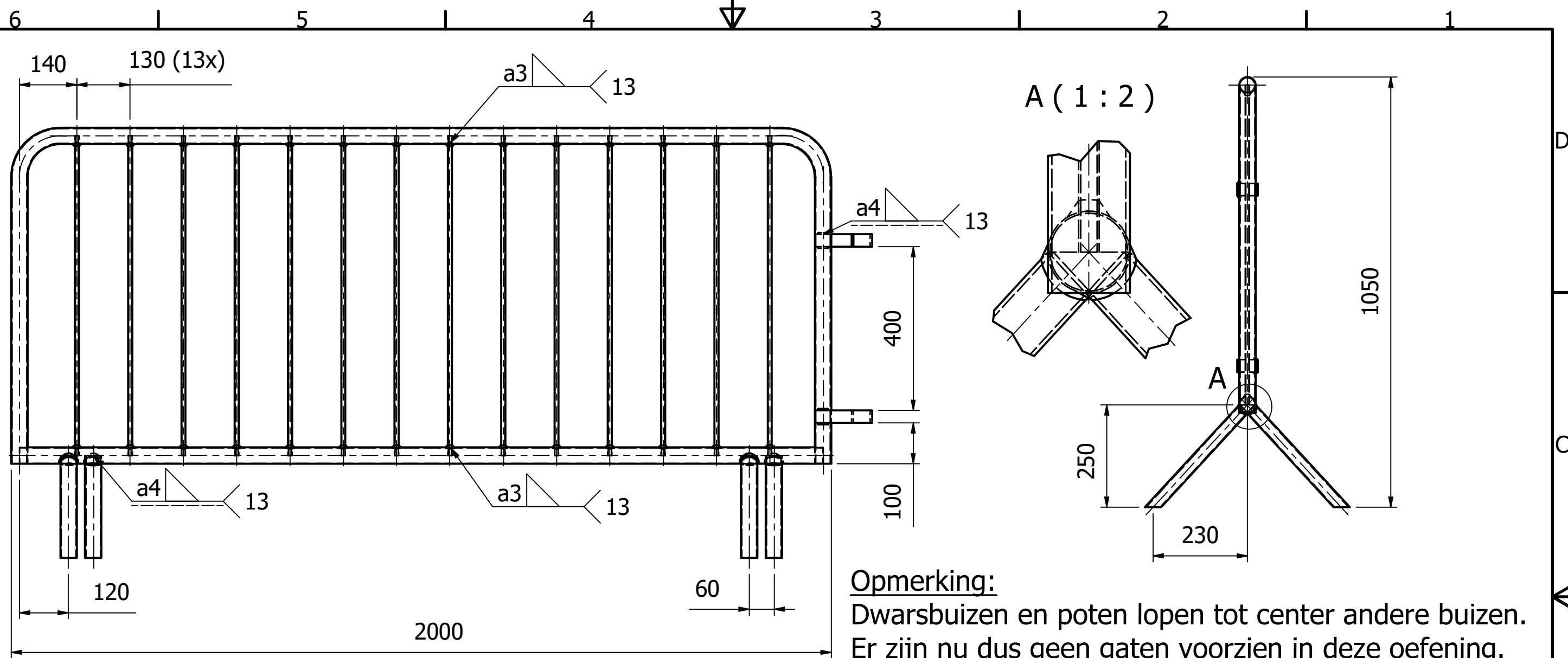


Assembly dak



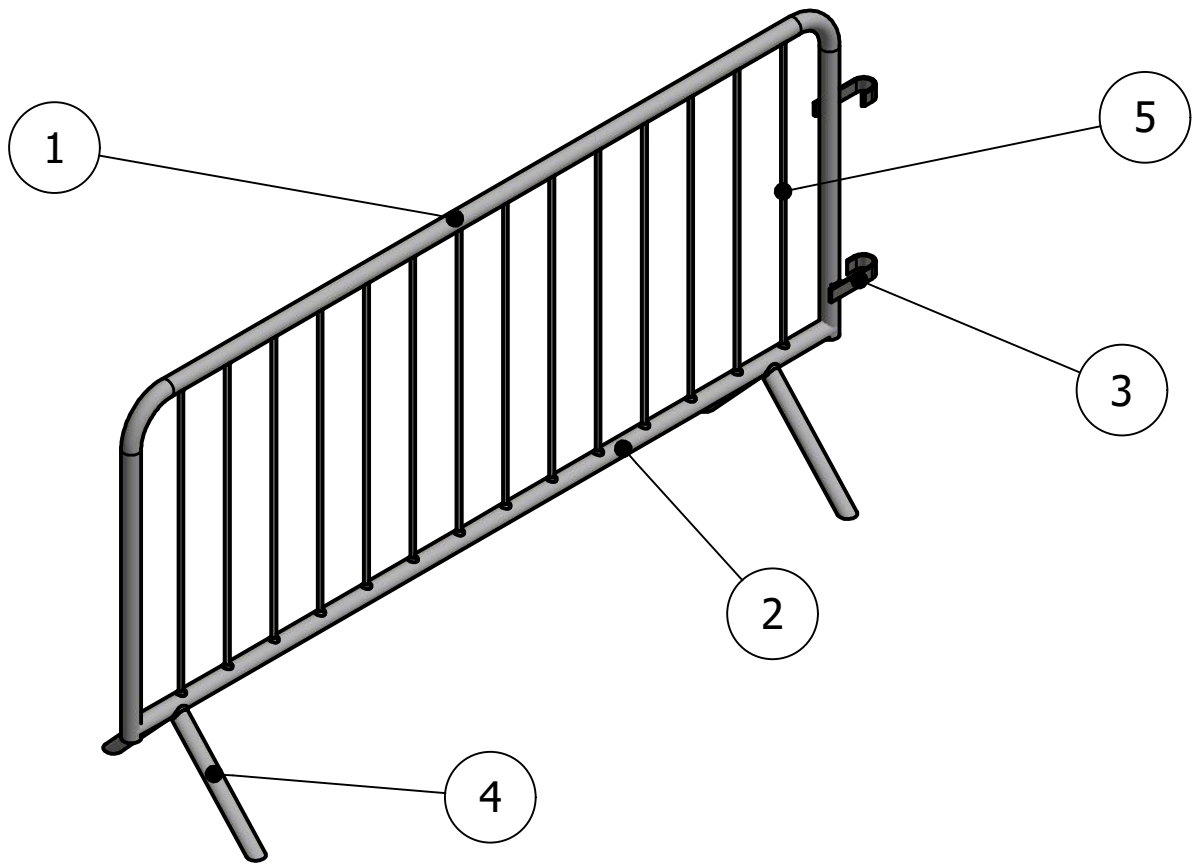
Tip : Doe shell na plaatsen 6 dopjes

Designed by Danny Dijckmans	Checked by	Approved by	Date	Date 5/12/2019	
			lego3x2 dak-poort-trap		Edition
					Sheet 1 / 1



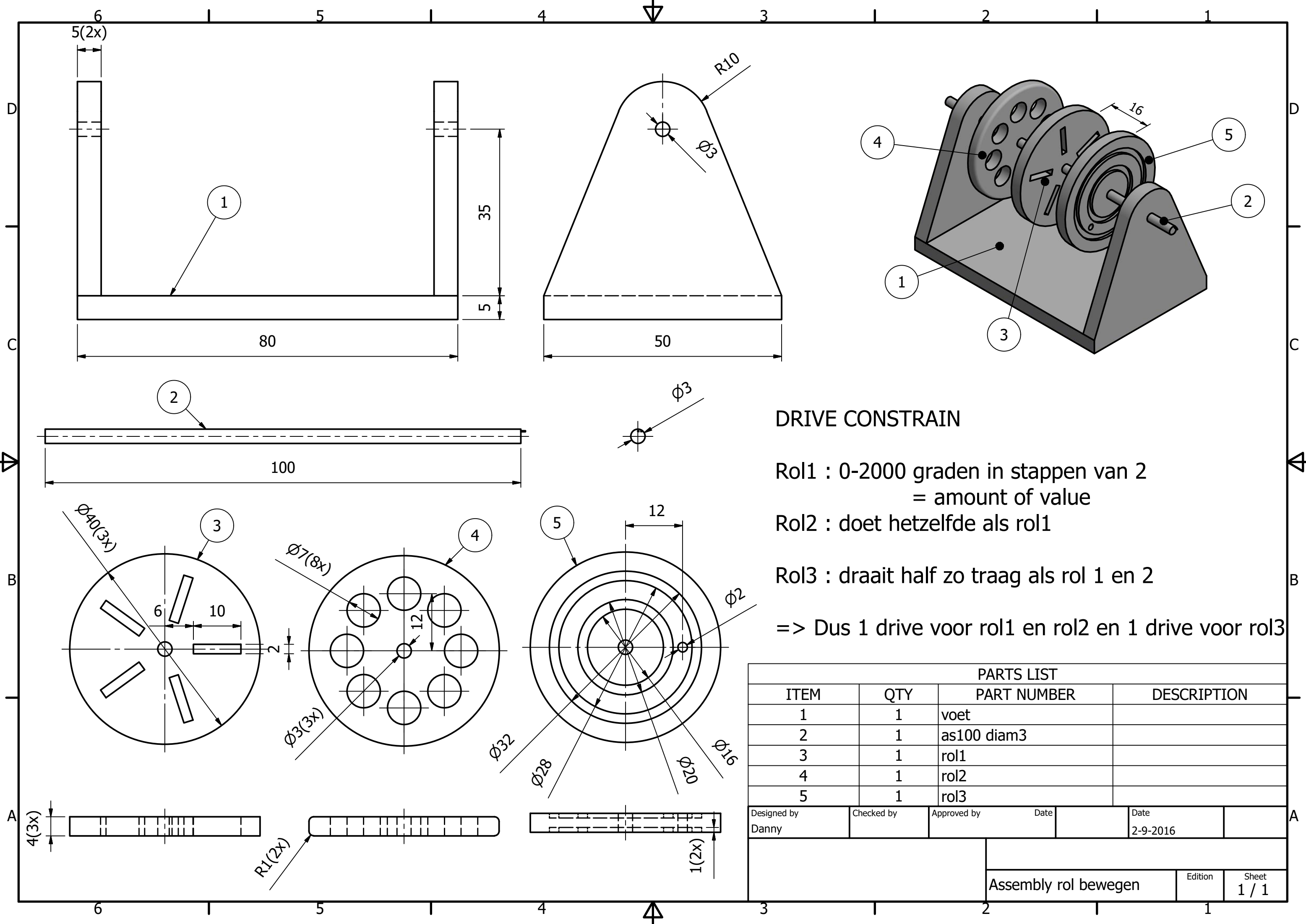
Opmerking:
 Dwarsbuizen en poten lopen tot center andere buizen.
 Er zijn nu dus geen gaten voorzien in deze oefening.

Tekentip:
 De 2 haken tov elkaar constainen en dan met de buis.
 De 2 linkse poten tov elkaar constainen en dan met de buis.
 Tenslotte pattern over afstand 1700mm



PARTS LIST			
ITEM	QTY	PART NUMBER	DESCRIPTION
1	1	Rand	Aluminium
2	1	Rand onder	Aluminium
3	2	Haak	Aluminium
4	4	Poot	Aluminium
5	14	Dwarsbuis	Aluminium

Designed by Danny Dijckmans	Checked by	Approved by	Date	Date 23/11/2016
Dranghek			Edition	Sheet 1 / 1



DRIVE CONSTRAIN

Rol1 : 0-2000 graden in stappen van 2
 = amount of value

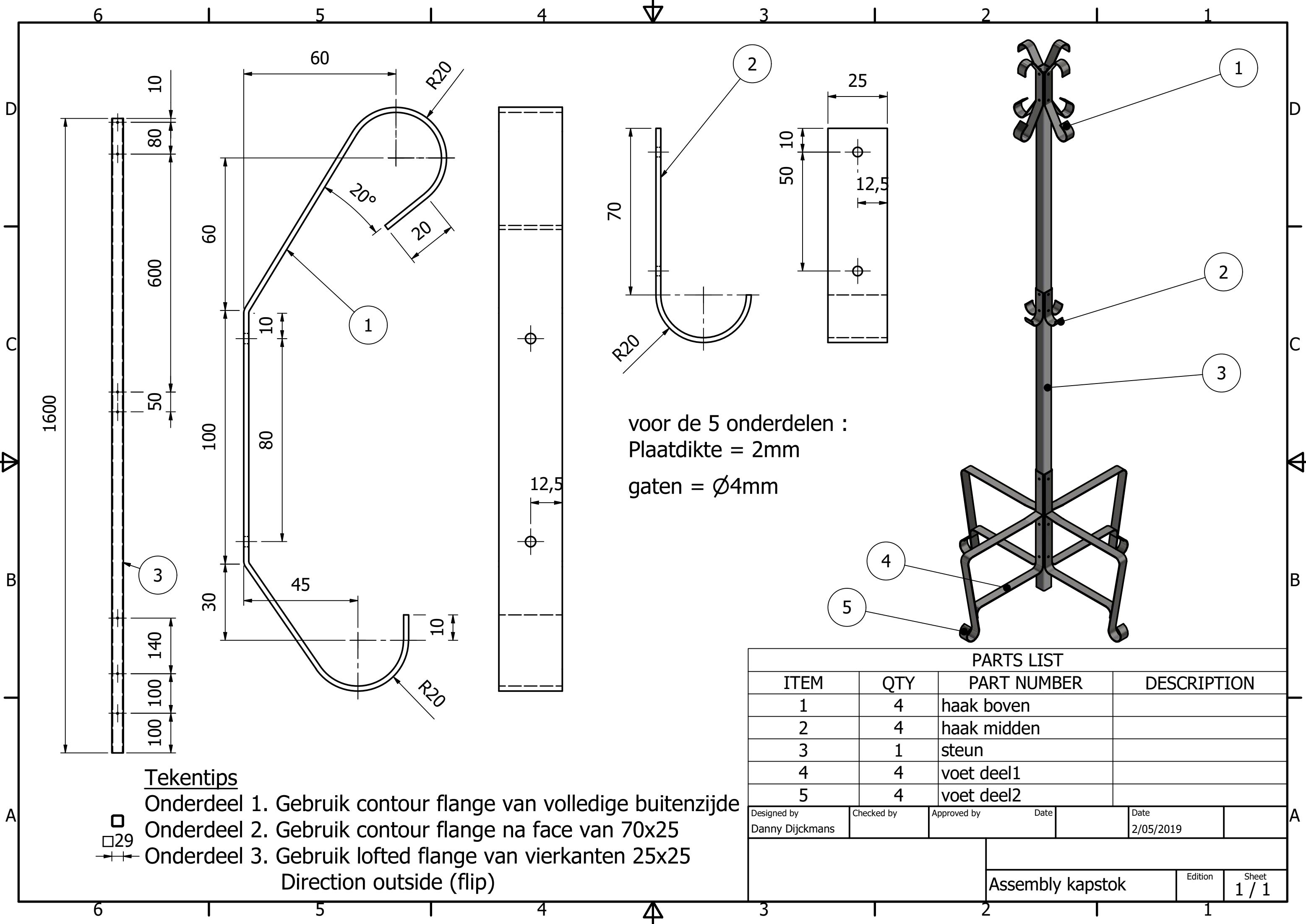
Rol2 : doet hetzelfde als rol1

Rol3 : draait half zo traag als rol 1 en 2

=> Dus 1 drive voor rol1 en rol2 en 1 drive voor rol3

PARTS LIST			
ITEM	QTY	PART NUMBER	DESCRIPTION
1	1	voet	
2	1	as100 diam3	
3	1	rol1	
4	1	rol2	
5	1	rol3	

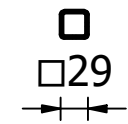
Designed by Danny	Checked by	Approved by	Date	Date 2-9-2016
----------------------	------------	-------------	------	------------------



voor de 5 onderdelen :
 Plaatdikte = 2mm
 gaten = Ø4mm

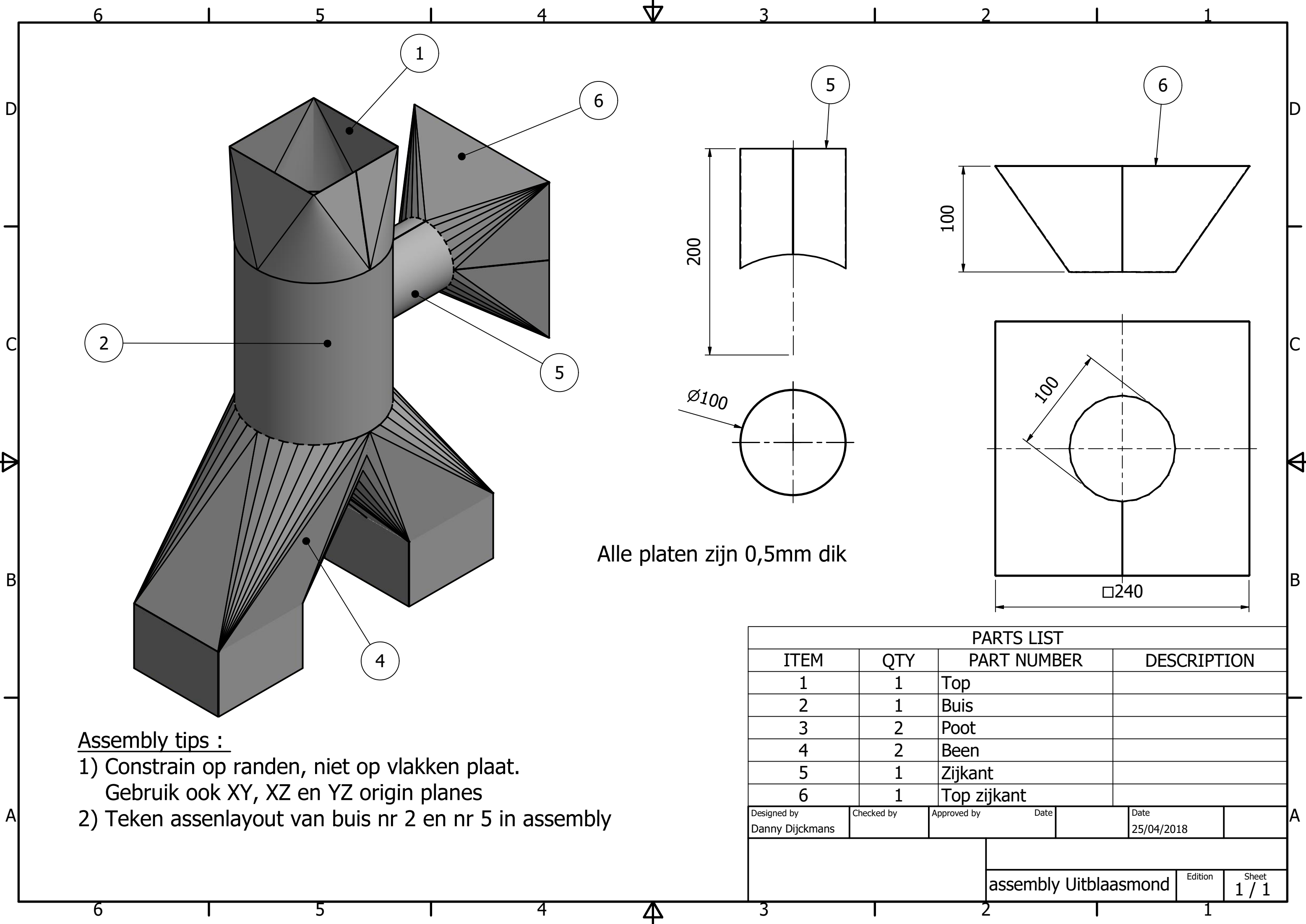
Tekentips

- Onderdeel 1. Gebruik contour flange van volledige buitenzijde
- Onderdeel 2. Gebruik contour flange na face van 70x25
- Onderdeel 3. Gebruik lofted flange van vierkanten 25x25
 Direction outside (flip)



PARTS LIST			
ITEM	QTY	PART NUMBER	DESCRIPTION
1	4		haak boven
2	4		haak midden
3	1		steun
4	4		voet deel1
5	4		voet deel2

Designed by Danny Dijckmans	Checked by	Approved by	Date	Date 2/05/2019
			Assembly kapstok	Edition 1
			Sheet 1 / 1	



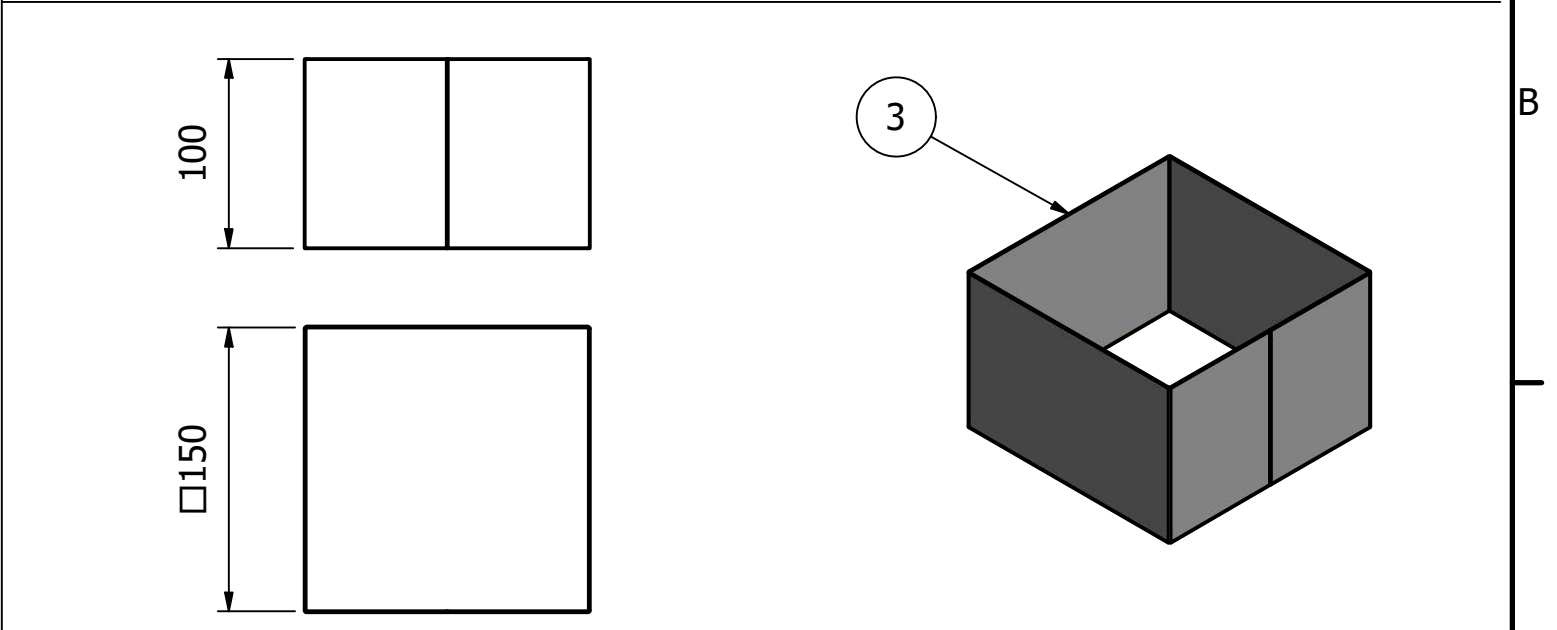
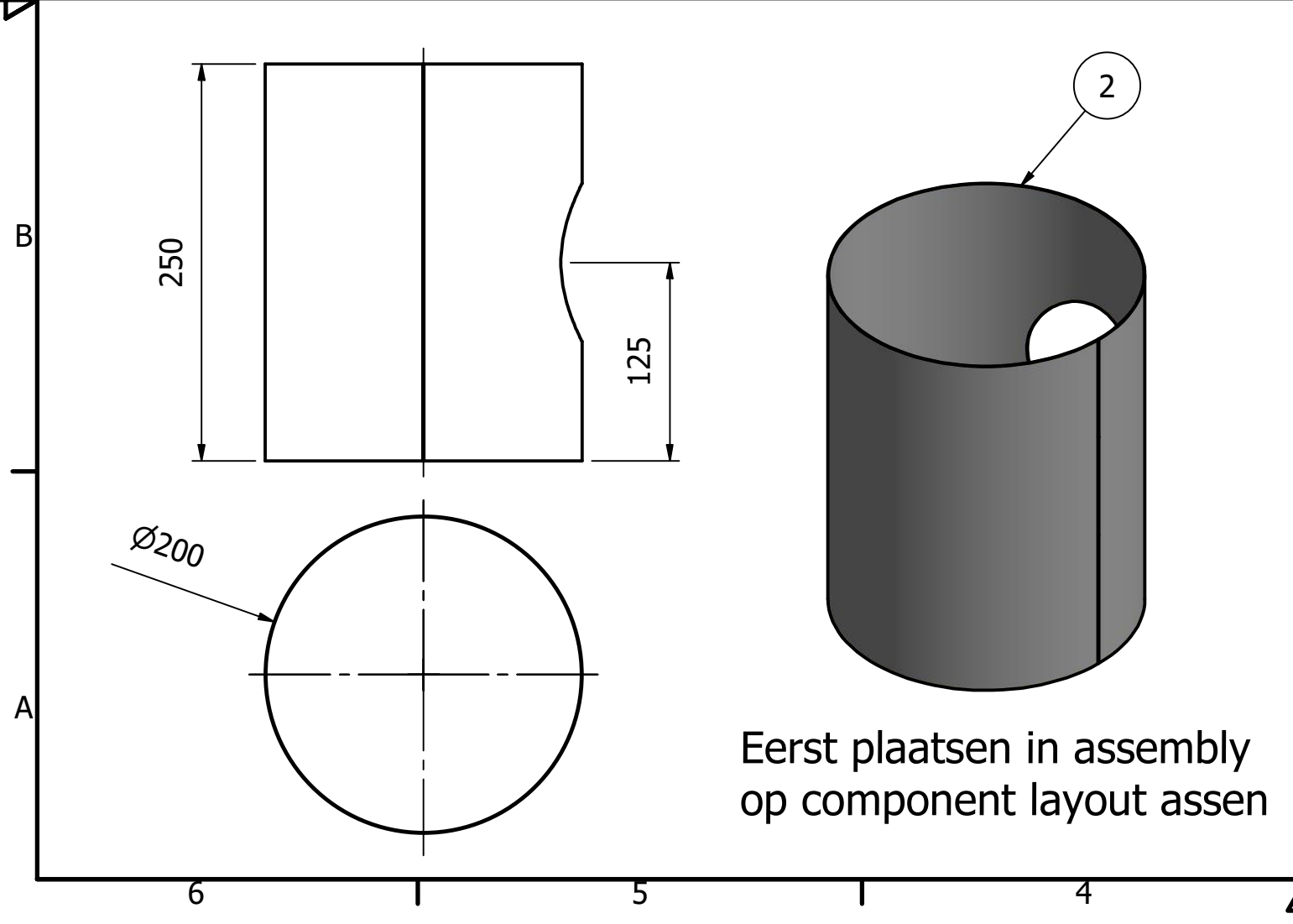
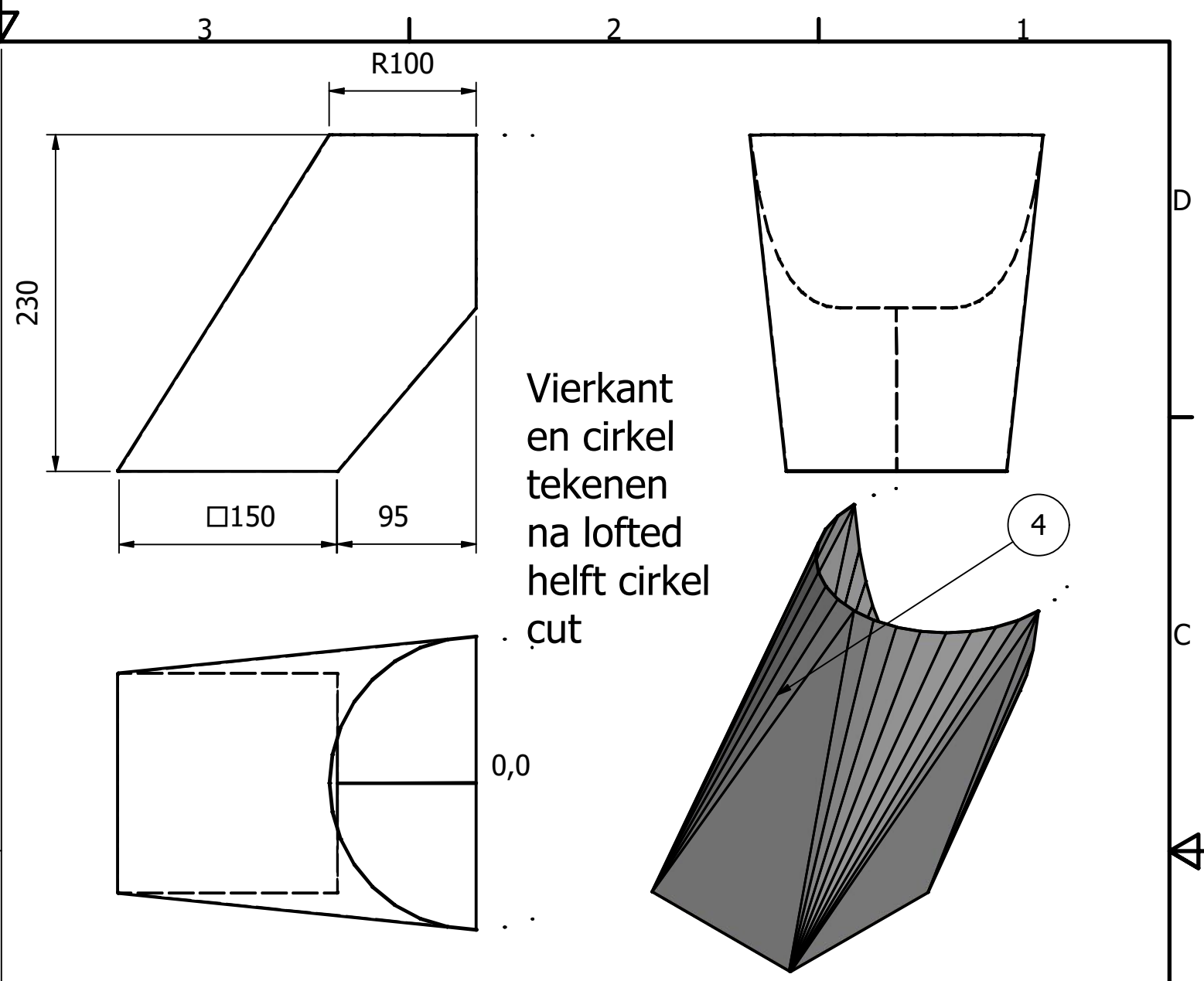
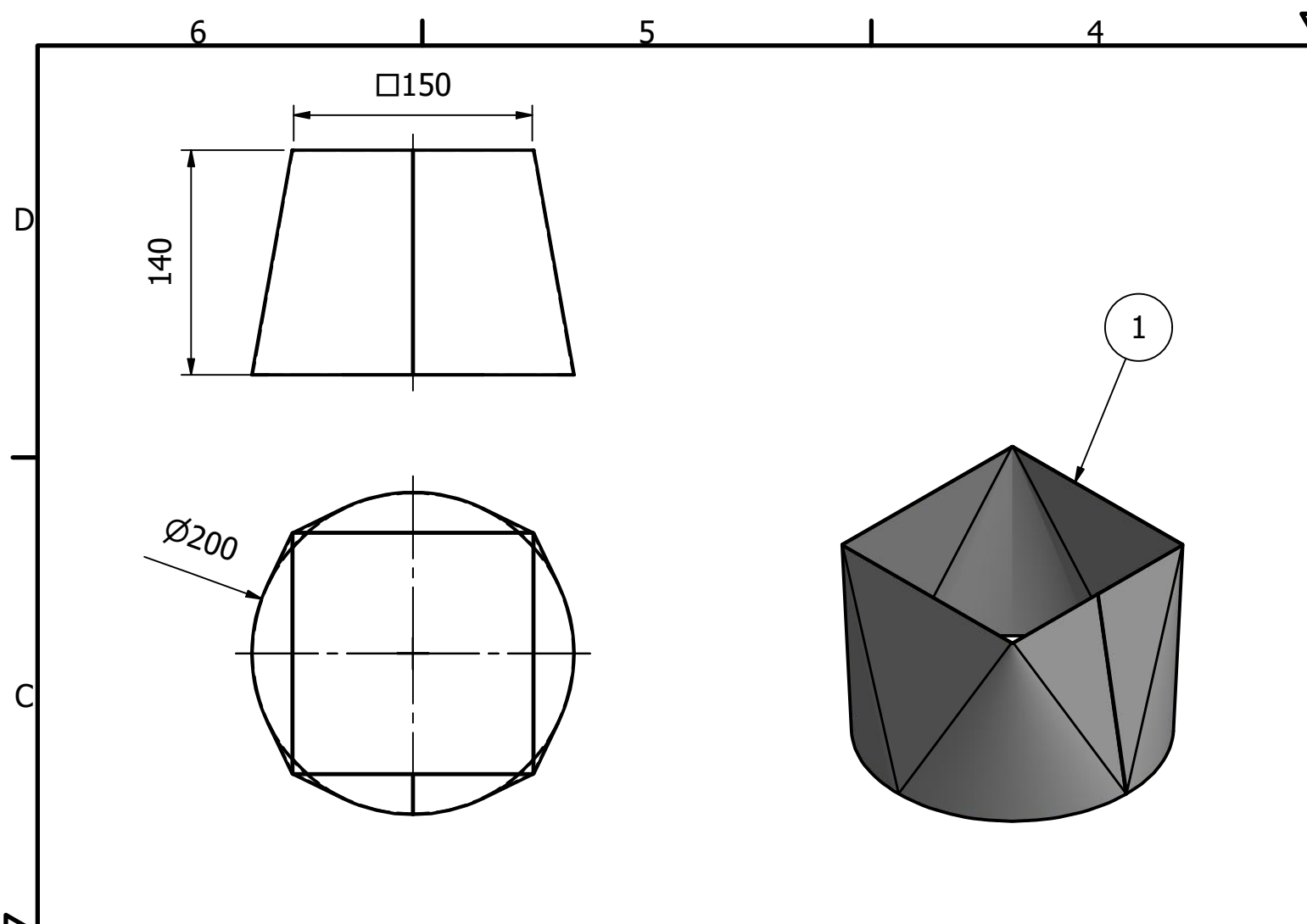
Assembly tips :

- 1) Constrain op randen, niet op vlakken plaat.
Gebruik ook XY, XZ en YZ origin planes
- 2) Teken assenlayout van buis nr 2 en nr 5 in assembly

Alle platen zijn 0,5mm dik

PARTS LIST			
ITEM	QTY	PART NUMBER	DESCRIPTION
1	1	Top	
2	1	Buis	
3	2	Poot	
4	2	Been	
5	1	Zijkant	
6	1	Top zijkant	

Designed by Danny Dijckmans	Checked by	Approved by	Date	Date 25/04/2018
		assembly Uitblaasmond		
		Edition	Sheet 1 / 1	



Designed by Danny Dijckmans	Checked by	Approved by	Date	Date 25/04/2018	
			onderdelen uitblaasmond		Edition
					Sheet 1 / 1